



DOWNLOAD  
FULL CATALOGUE

[www.envitect.com](http://www.envitect.com)

curated collection for modern

# architecture

compiles more than 15 innovative products to play you without limit, this collection unveils all new silika, stone, silk, velvet and wooden designs for your dream project.



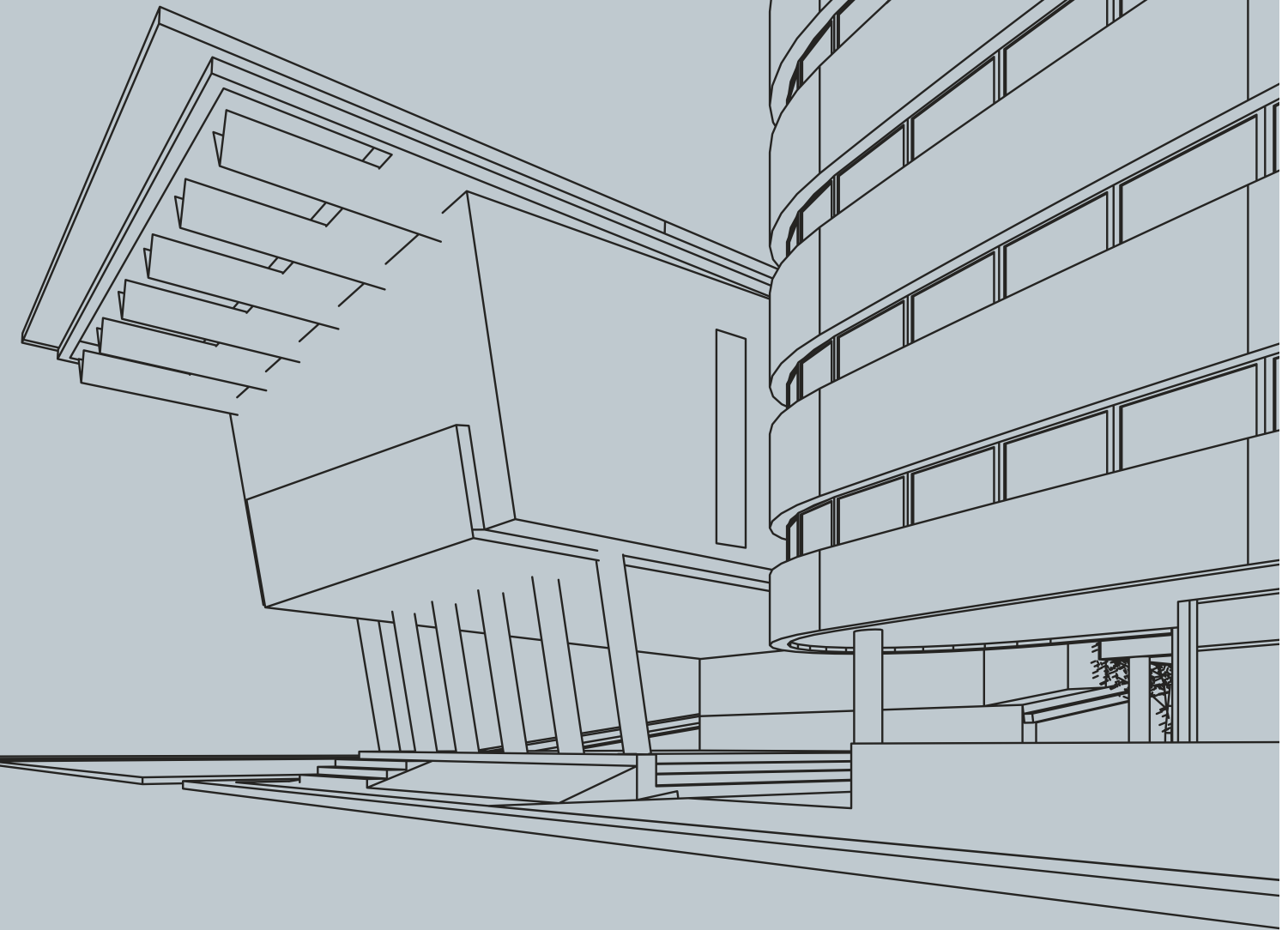
**ENVITECT**

Survey No.166/3, B/H Rangpar bus station, NH-27,  
At-Rangpar, Taluka-Wankaner, Dis.-Morbi 363621, Gujarat (India)

Web: [www.envitect.com](http://www.envitect.com) | Call: +91 9978907079

For Domestic Inquiry      For Export Inquiry  
Mail: [sales@envitect.com](mailto:sales@envitect.com)      Mail: [exports@envitect.com](mailto:exports@envitect.com)

[www.envitect.com](http://www.envitect.com) +91 9978907079

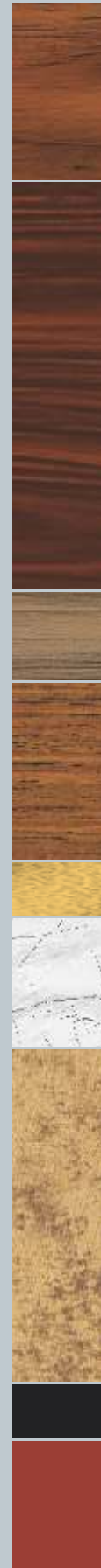


**ENVITECT**  
ALUMINIUM COMPOSITE PANELS

curated collection for modern  
**architecture**

2023

**2023-24**  
EDITION IS  
RARE AND  
SPECIAL



**27**  
NEW  
SHADES

**6**  
NEW  
SURFACES

**78**  
ELEVATION  
PRODUCTS

[www.envitect.com](http://www.envitect.com)



Since its inception in 2017, envitect is one of the prominent manufacturer of ACP panel in Gujarat. At the heart of our stunning collection of Aluminium composite panels aka ACP, lies our dedication to quality and innovation. Here, you will find an extensive range of shades, designs and patterns, crafted to match recent trends.

From smooth to brighter, our ACP Sheets cater to a wide range of Applications, styles and tastes. Whether you are an Architect looking to create a masterpiece, or a fabricator searching for premium quality material and services, Envitect is the right choice for everyone.

Our commitment to excellence extends beyond our products, to our customer service as well. We are always available to assist and guide you in choosing the perfect colors and designs for your dream projects.

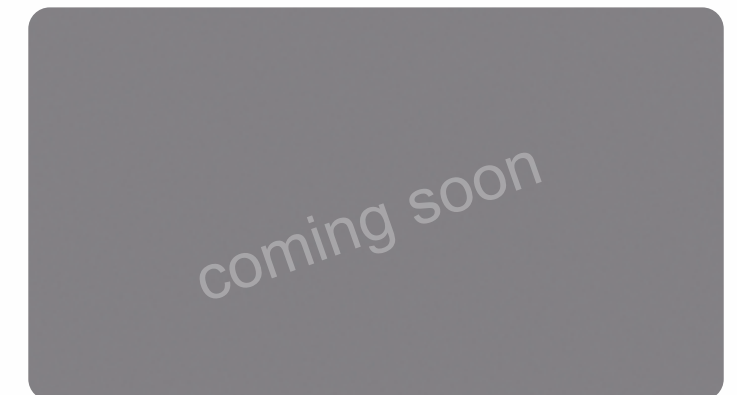
*Let's create magic in your spaces, together. Start this fascinating journey while exploring a few ideas at a time as you move ahead from each of these pages.*

**ENVITECT**  
ALUMINIUM COMPOSITE PANELS





■ **EC 503** | BEIGE

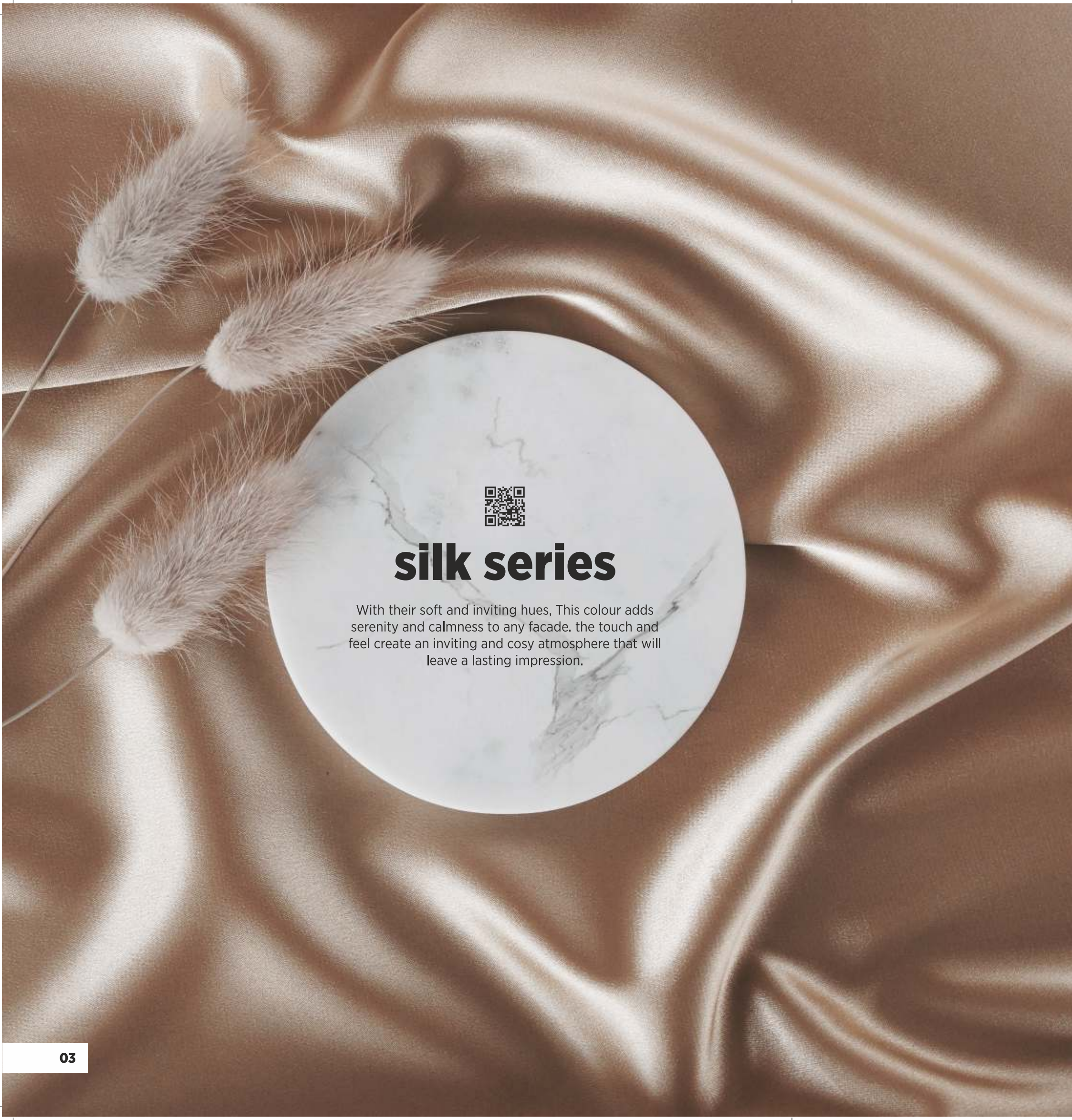


■ **EC 502** | SLATE GREY



■ **EC 501** | SILK GREY

- ◆ Silver 3 mm
- ▲ Gold 3 mm
- Platinum 3 or 4 mm
- Pearl 3 or 4 mm
- ◆ Diamond 4 mm



## **silk series**

With their soft and inviting hues, This colour adds serenity and calmness to any facade. the touch and feel create an inviting and cosy atmosphere that will leave a lasting impression.

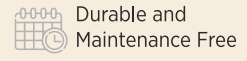




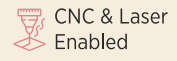
Standard Quality



Unlimited Design Options



Durable and Maintenance Free



CNC & Laser Enabled



**EC 505**  
GREY MOON



**EC 506**  
SHADOW GREY



## silika series

A range of elegant shades inspired by the tranquil hues of flowing water. From light and airy greys to deep, smoky tones, these elegant overlays add a calming essence of the sand into your upcoming projects with River Slit!



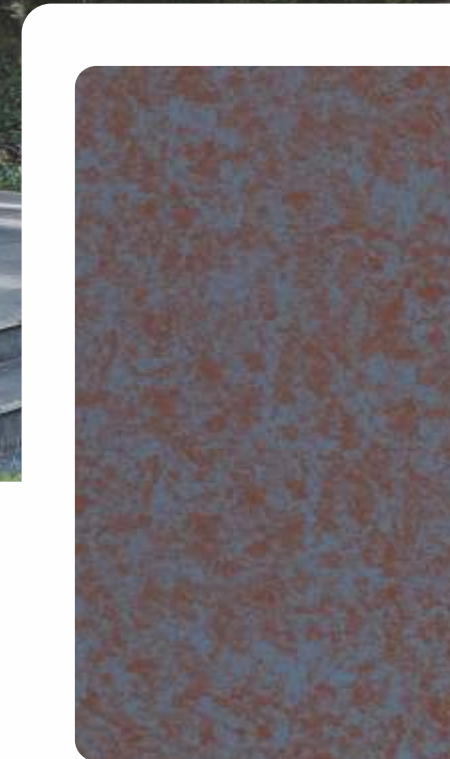
**EC-504**  
SUME STONE







**EC 401**  
CORTEN ABSTRACT



**EC 403**  
MERCURY ABSTRACT



**EC 402**  
JUPITER ABSTRACT

# abstract series



This design is reminiscent of the most subtle and refined version of abstract art. Perfect for highlighting surfaces, this a shade that will bring out the inner aesthete within you and will make you admire it in a new way each time.

Choose your product grade as per requirement  
\*\*\*kindly confirm your application area (Interior / exterior) as products are of different grade

◆ Silver  
3 mm

▲ Gold  
3 mm

■ Platinum  
3 or 4 mm

○ Pearl  
3 or 4 mm

◆ Diamond  
4 mm

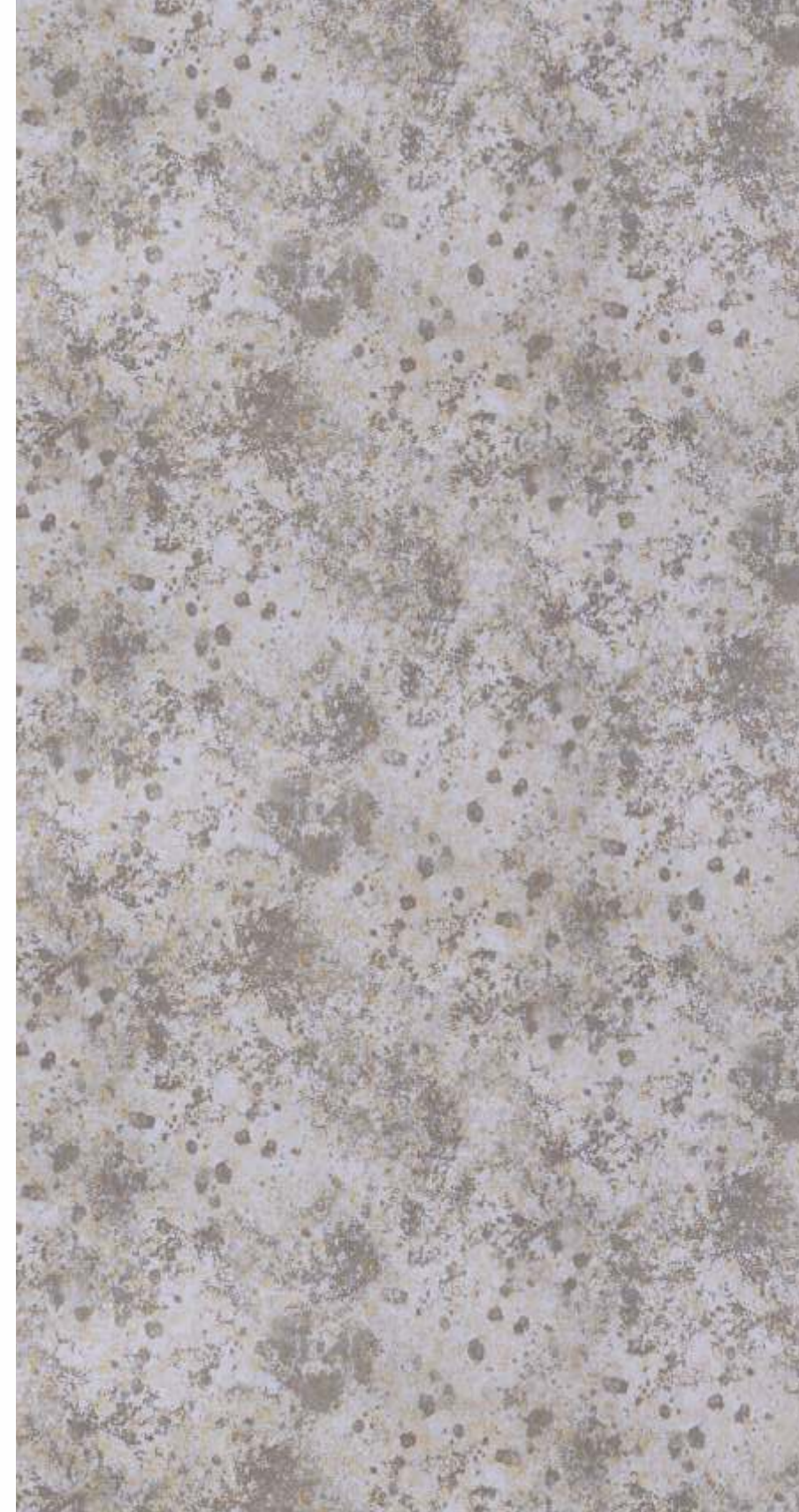
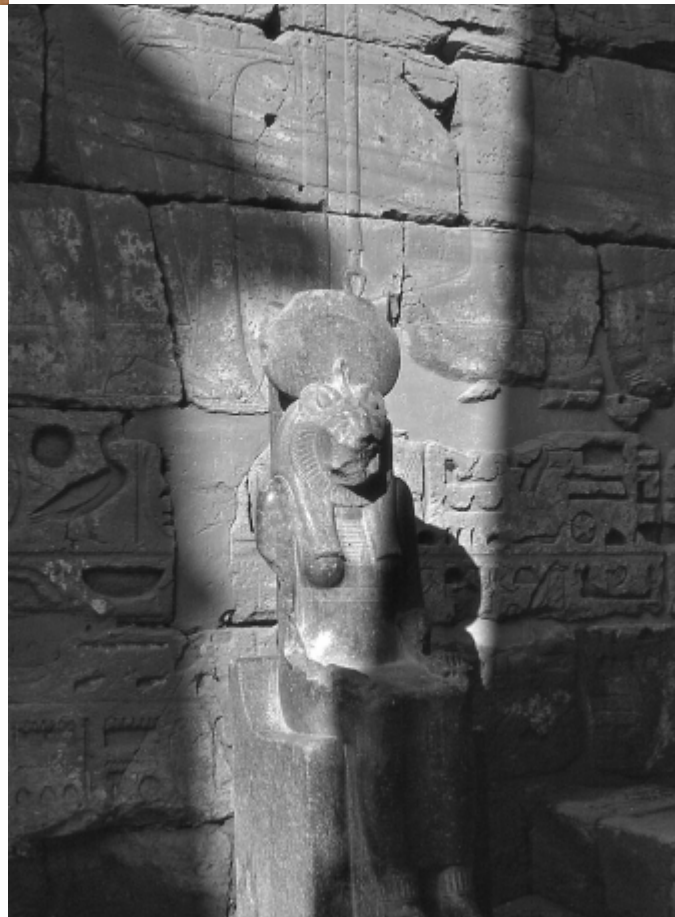




**EC 405**  
GOLD STAR



**EC-404**  
RED VELVET



**EC 406**  
SILVER STAR



# velvet series

This design is reminiscent of the most subtle and refined version of abstract art. Perfect for highlighting surfaces, this a shade that will bring out the inner aesthete within you and will make you admire it in a new way each time.



# Marble Series



**EC 109**  
EMPERADOR DARK



**EC 122**  
WHITE STATUARIO



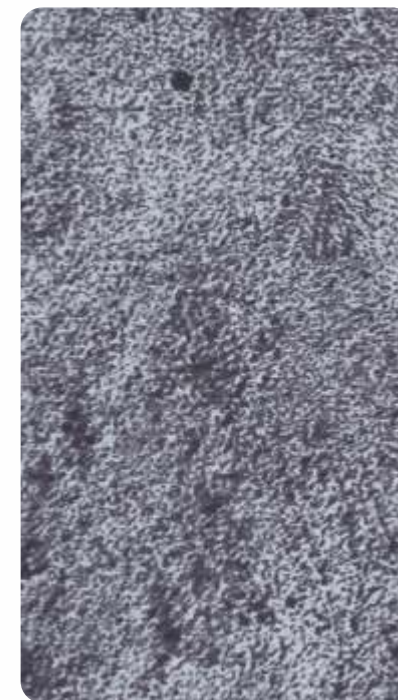
**EC 112**  
PEARL WHITE



**EC 115**  
ITALIAN BLACK



**EC 121**  
PERLATO



**EC 126**  
GRAPHITE STONE



**EC 127**  
TURKISH STONE



**EC 128**  
BEIGE STONE



# Stone series

Immerse yourself in the allure of mesmerizing marble and stones that imbue each piece with its own unique character. Designs infusing your spaces, signage and facade with an unparalleled sense of euphoria.



Standard Quality

Unlimited Design Options

Durable and Maintenance Free

CNC & Laser Enabled

## Wooden Series

**ENVITECT**  
ALUMINIUM COMPOSITE PANELS



*Exclusive* reminiscent of real wood

For an eye-catching yet composed look, this is an ideal choice for wall cladding. Its design is inspired by natural textures, and perfectly complements the grandeur of vertical lines in your private spaces, adding a touch of sophistication to your elevation.



**EC 118**  
PERSIAN WINE



**EC 119**  
TIMBER WALNUT



**EC 120**  
NATURAL CHESTNUT



**EC 123**  
BALINESE WALNUT



**EC 124**  
DARK OAK



**EC 125**  
NOVOCINO PINE

◆ Silver  
3 mm

▲ Gold  
3 mm

■ Platinum  
3 or 4 mm

● Pearl  
3 or 4 mm

◆ Diamond  
4 mm



# Wooden Series



**EC 101**  
COUNTRY OAK



**EC 102**  
BRAZILIAN WALNUT



These wooden ACP are revolutionary design, ultra premium durability they are also one of the easiest elevation panels to install.



**EC 106**  
PEWTER KNOTTY WOOD



**EC 107**  
AFRICAN PINE



**EC 108**  
FLORENCE MAPLE



**EC 103**  
VINTAGE CHESTNUT



**EC 104**  
NORWAY SPRUCE



**EC 105**  
BLACK EBONY WOOD



**EC 110**  
PEWTER PINE



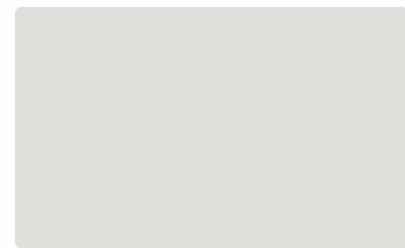
**EC 116**  
BURMA WOOD



**EC 117**  
BURMA TEAK







BRIGHT SILVER **EC 202**



METALLIC SILVER **EC 204**



CHAMPAGNE SILVER **EC 205**



CHAMPAGNE GOLD **EC 229**



METALLIC BRONZE **EC 208**



RICH GOLD **EC 226**



sparkling Premium metallic colors

silent yet powerful metallic colors are very rare and unseen in all every catalogue. It mostly preferred by the choosy people



PENNY COPPER **EC 201**



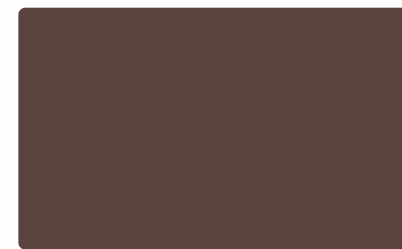
PEARL BROWN **EC 212**



BLUE SILVER **EC 206**



WINE METALLIC **EC 210**



CHOCO BROWN **EC 211**



JADE GREEN **EC 203**



ROSE METALLIC **EC 209**



SPECTRA GREY SILVER **EC 207**



**EC 303** BRUSH GOLD



**EC 302** BRUSH SILVER

realistic Premium brush metal  
mimic to a brush finished metal sheet mostly preferred for the signages and highlighters for buildings.

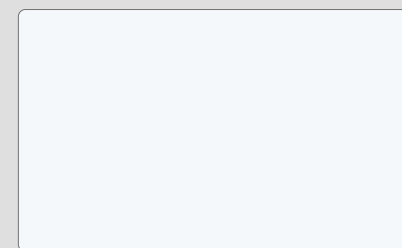
realistic Premium mirror series  
very edgy look and ambitious finishing make this product look a like to a sharp polished steel plate or a piece of mirror



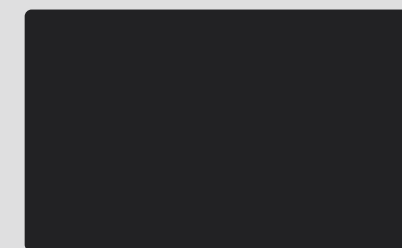
**EC 307** MIRROR FINISH



**EC 308** MIRROR GOLD



**EC 304** HIGH GLOSS WHITE



**EC 305** HIGH GLOSS BLACK



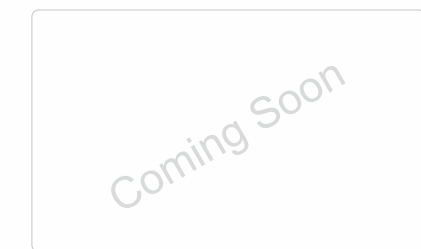
**EC 306** HIGH GLOSS RED



SPECTRA CHAMP SILVER **EC 227**



BURGANDY **EC 228**

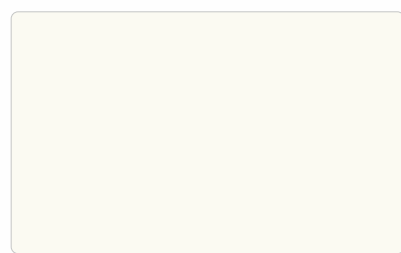


**EC 230**

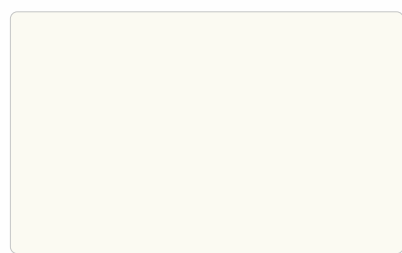




SIGNAL RED **EC 225**



PURE WHITE **EC 224**



OFF WHITE **EC 220**



BRIGHT RED **EC 213**



ORANGE **EC 214**



TRAFFIC YELLOW **EC 215**



SAM BLUE **EC 219**



SEA BLUE **EC 216**



LEMON YELLOW **EC 218**



DARK BLUE **EC 232**



JET BLACK **EC 223**



LIGHT GREY **EC 221**



REFRESHING GREEN **EC 217**



GEM GREEN **EC 222**

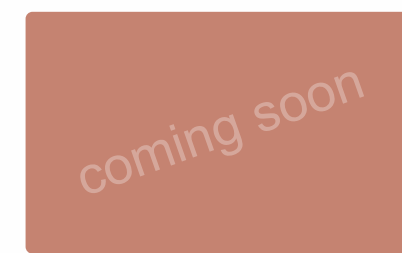


PARROT GREEN **EC 231**

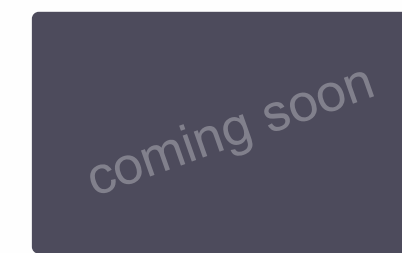
## Solid Colors



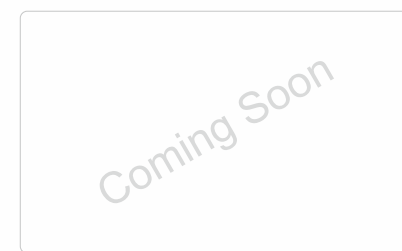
PASTEL GREEN **EC 233**



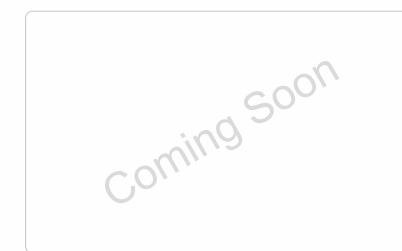
DHOLPUR RED **EC 234**



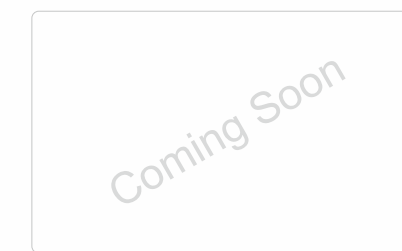
COAL GREY **EC 235**



**EC 236**



**EC 237**



**EC 238**



## FEATURES & ADVANTAGES

Envitect aluminum composite panels consisting of two skins of aluminum coated with high-quality lacquer systems and a flame-retardant or non-combustible core material.

They are characterized by easy processing, formability, excellent flatness, bending stiffness and weather resistance. In addition, they are impact and break resistant and very durable. The ideal material for sophisticated facade design for both existing and new buildings



Wide Range of Colors & Designs



CNC Cutting Compatible



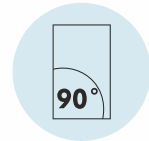
Weather Proof



Easy To Clean and Maintain



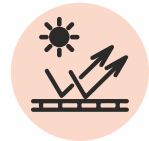
Heat Resistant



90° Bendable



Impact Resistant



UV Resistant



Light Weight



Sound Resistant



Perfectly Even Surface



Long Lasting



Environment Friendly



Easy To Install



Termite Resistant



Solvent Resistant



Special Protection Coating

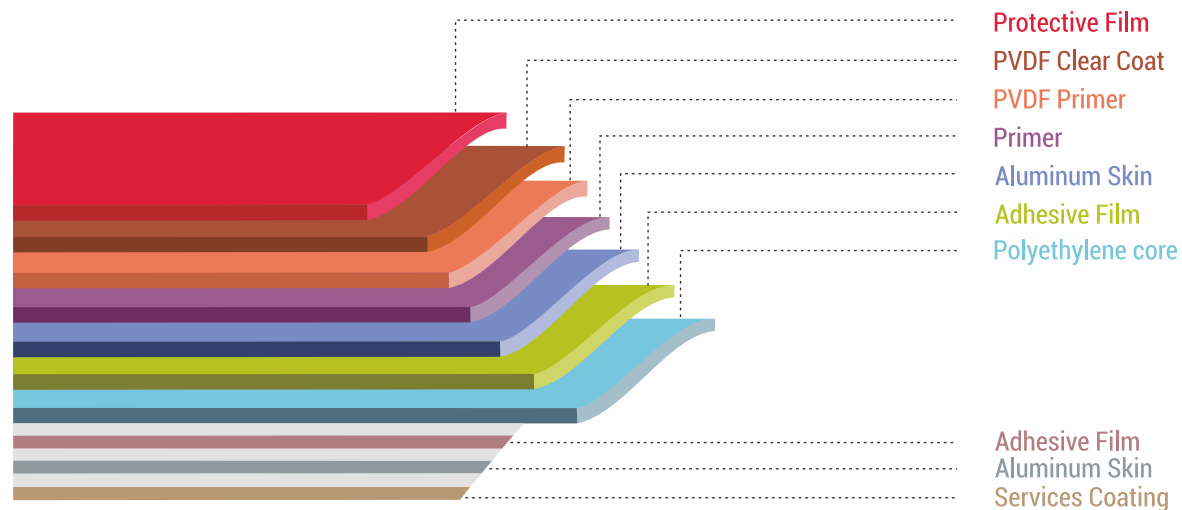


Scratch Resistant



No Colour Fastness

## COMPOSITION



| GRADE           | TOTAL THICKNESS | FRONT COIL THICKNESS | LDPE CORE THICKNESS | BACK COIL THICKNESS | WARRANTY  | COATING | APPLICATION AREA |
|-----------------|-----------------|----------------------|---------------------|---------------------|-----------|---------|------------------|
| <b>DIAMOND</b>  | 4MM             | 0.5 MM               | 3MM                 | 0.5MM               | 15 YEARS* | PVDF    | EXTERIOR         |
| <b>PEARL</b>    | 4MM             | 0.25MM               | 3.5MM               | 0.25MM              | 12 YEARS* | PVDF    | EXTERIOR         |
|                 | 3MM             | 0.25MM               | 2.5MM               | 0.25MM              | 12 YEARS* | PVDF    | EXTERIOR         |
| <b>PLATINUM</b> | 4MM             | 0.25MM               | 3.5MM               | 0.25MM              | 10 YEARS* | PVDF    | EXTERIOR         |
|                 | 3MM             | 0.25MM               | 2.5MM               | 0.25MM              | 10 YEARS* | PVDF    | EXTERIOR         |
| <b>GOLD</b>     | 3MM             | 0.15MM               | 2.7MM               | 0.15MM              | N/A       | PE      | INTERIOR         |
| <b>SILVER</b>   | 3MM             | 0.10MM               | 2.8MM               | 0.10MM              | N/A       | PE      | INTERIOR         |

### Panel Dimensions

#### Standard Dimensions

1220 MM X 2440 MM  
1220 MM X 3050 MM  
1220 MM X 3660 MM

**Thickness :** 2 MM to 6 MM

**Aluminum Skin Thickness :** upto 0.5 MM  
(Special thickness and size available on request )

### Product Tolerances

**Width** ± 2.00 mm  
**Length** ± 4.00 mm  
**Thickness** ± 0.20 mm  
**Coil Thickness** ± 0.02 mm  
**Bow** Max 0.5 % of the length and/ or width maximum 5.00 mm  
**Squareness** or width maximum 5.00 mm  
**Color Variations** ±Δ5 from batch to batch  
**Surface Defect** Surface shall not have any irregularities such as roughness, bucking and other imperfections.

### FR GRADE ACP

While glass breakage / fallout allows fire to enter / exit, cladding allows / prevents spread



Applicable on Platinum Series



Applicable on Pearl Series

\*\*warranty applicable with terms and conditions. For Complete details, kindly contact dealer and ask for warranty certificate.

\*\*products which are not defined by any grade are lay under decorative products category which do not offer any warranty