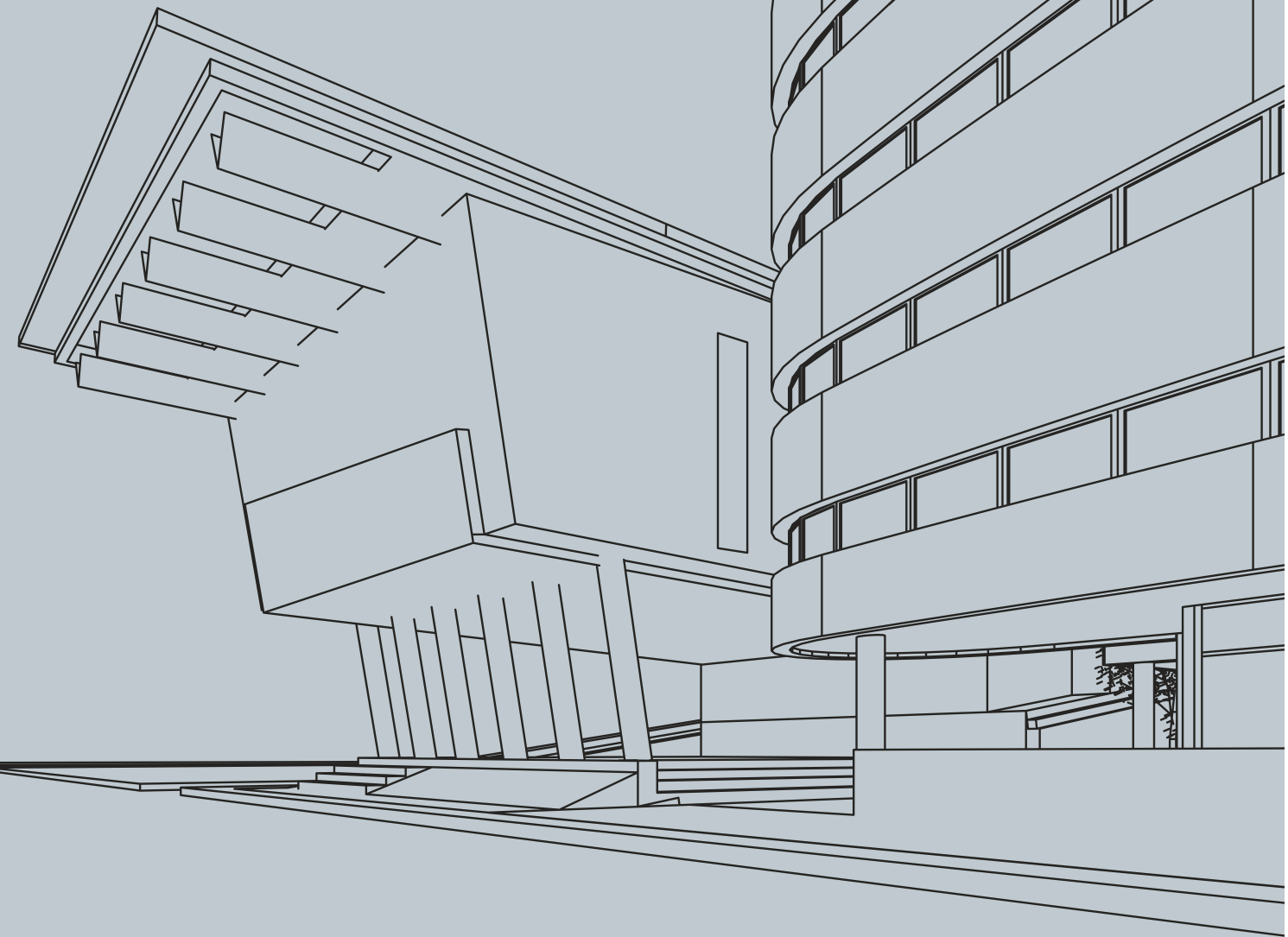


www.envitect.com

curated collection for modern

architecture

compiles more than 15 innovative products allow to play you without limit this collection launching sand, stone, feather and rustic designs for marvel.



www.envitect.com +91 9377663409



ENVITECT

Survey no.166/3, B/H Rangpar bus station,
NH-27, At-Rangpar, Taluka-Wankaner,
Dis.-Morbi 363621, Gujarat (India)

Call: +91 9978907079
Mail: sales@envitect.com
Web: www.envitect.com

ENVITECT
ALUMINIUM COMPOSITE PANELS

curated collection for modern
architecture

2023

2023
EDITION IS
RARE AND
SPECIAL



27
NEW
SHADES

6
NEW
SURFACES

78
ELEVATION
PRODUCTS



Our most important asset is our people, and we do what we do with an unmatched enthusiasm. We share our knowledge to support you in creating amazing facades that truly bring an architect's vision to life. Our range of ACP Panel can be seen in best housing developments, manufacturing facilities and of course public and commercial buildings.

Our products have been tested by independent parties and passed with excellent scores. Under strict quality control, our products are exported to America, Canada, UK, Australia, Russia, France, Italy, Middle East regions, Thailand, and Singapore.

We are standing apart from other manufacturers with modern production line enhanced for quality and consistent production, which enables us to work on more demanding and more flexible specification projects and to deliver them on time.

silk series

Our products have been tested by independent parties and passed with excellent scores. Under strict quality control, our products are exported to America and Singapore.



■ **EC 503** | BEIGE



■ **EC 502** | SLATE GREY



■ **EC 501** | SILK GREY

◆ Silver Serie
3 mm

▲ Gold Serie
3 mm

■ Platinam Serie
3 or 4 mm

○ Pearl Serie
3 or 4 mm

◆ Diamond Serie
4 mm



Standard Quality



Unlimited Design Options



Durable and Maintenance Free



CNC & Laser Enabled



EC 505
GREY MOON



EC 506
SHADOW GREY



silika series

Our products have been tested by independent parties and passed with excellent scores. Under strict quality control, our products are exported to America and Singapore.



EC-504
SUME STONE





EC 401
CORTEN ABSTRACT



EC 403
MERCURY ABSTRACT

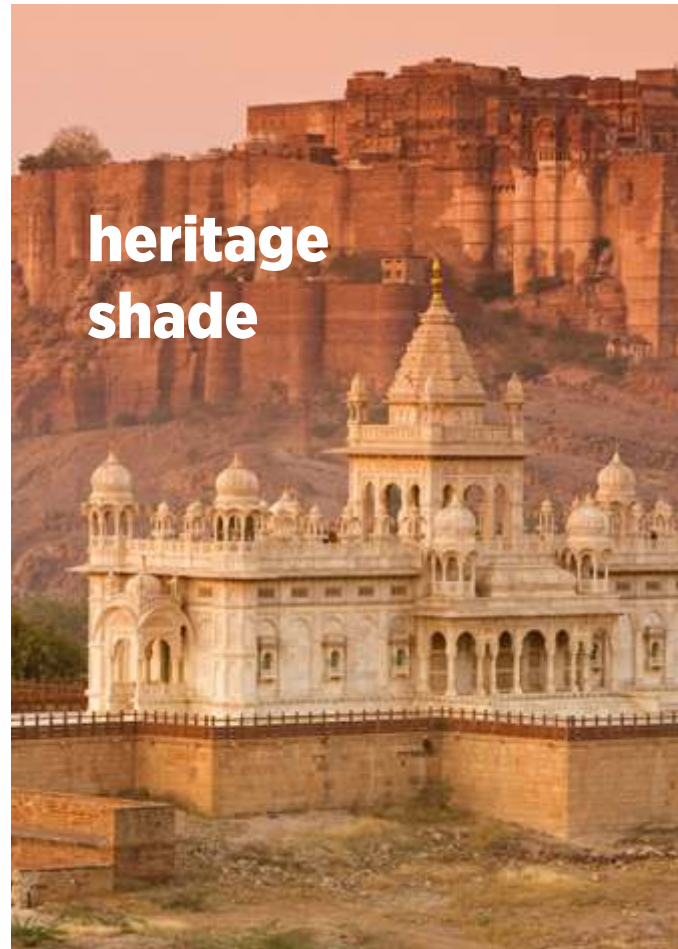


EC 402
JUPITER ABSTRACT



abstract series

Our products have been tested by independent parties and passed with excellent scores. Under strict quality control, our products are exported to America, Canada, UK, Australia, Russia, France, Italy, Middle East regions, Thailand, and Singapore.



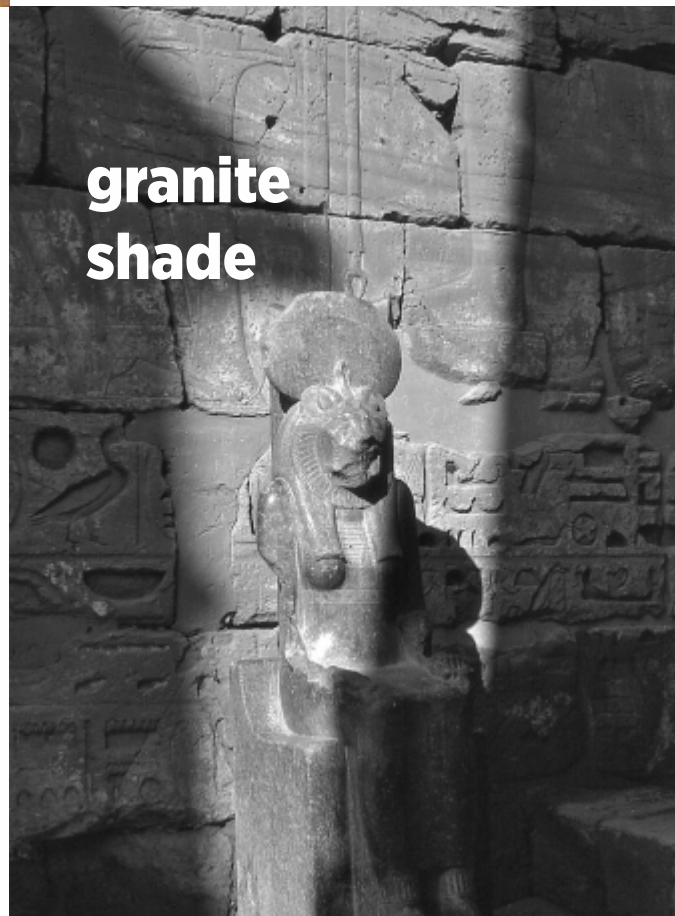
heritage shade



EC 405
GOLD STAR



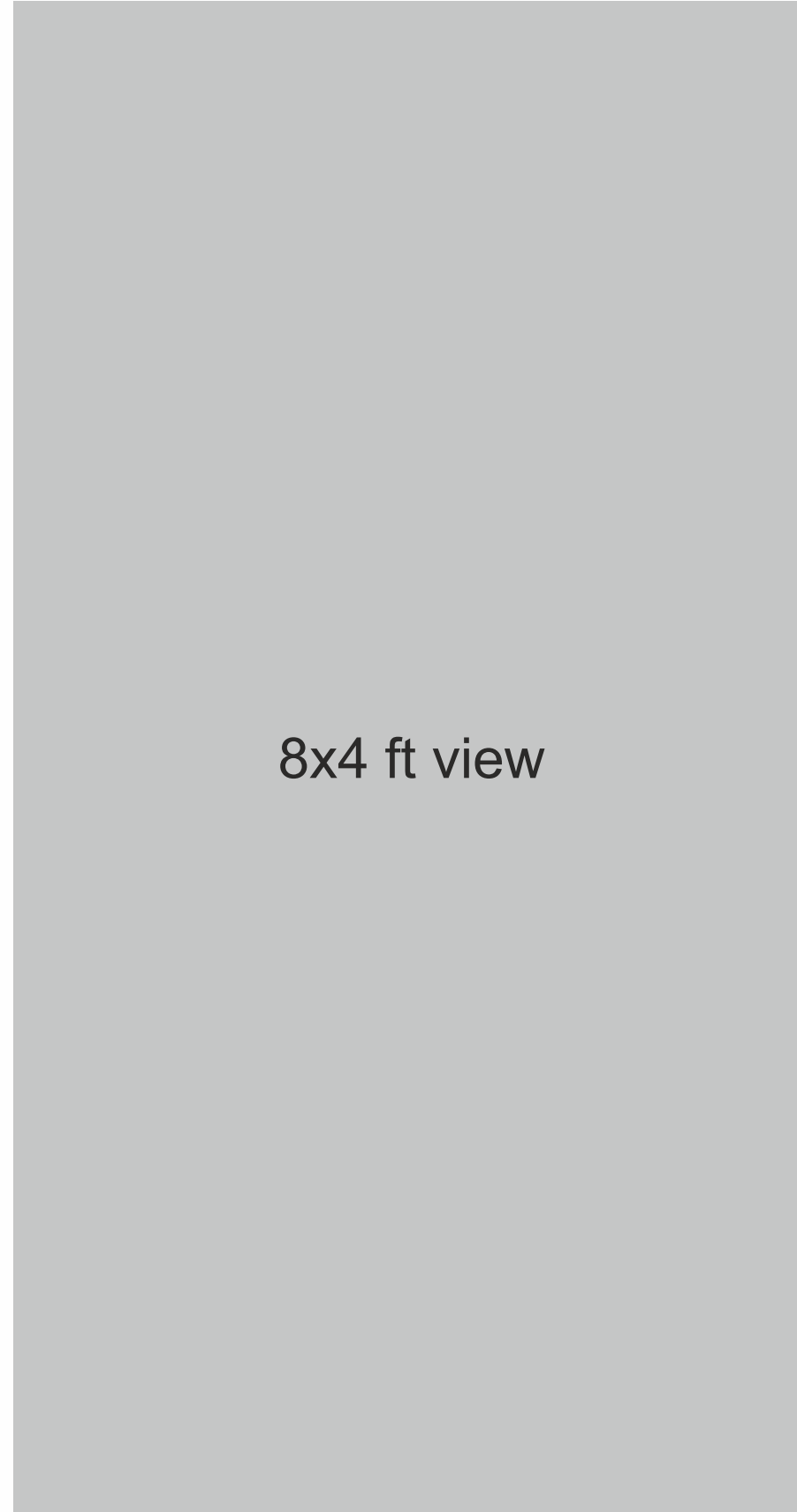
EC-404
RED VELVET



granite shade



EC 406
SILVER STAR



8x4 ft view

valvet series

Our products have been tested by independent parties and passed with excellent scores. Under strict quality control, our products are exported to America, Canada, UK, Australia, Russia, France, Italy, Middle East regions, Thailand, and Singapore.



EC 109
EMPERADOR DARK



EC 122
WHITE STATUARIO



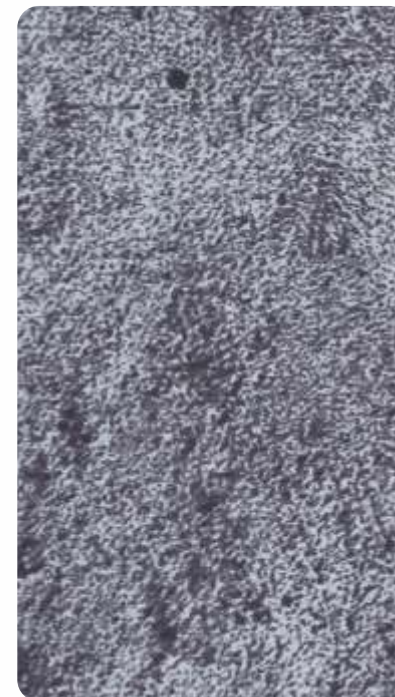
EC 112
PEARL WHITE



EC 115
ITALIAN BLACK



EC 121
PERLATO



EC 126
GRAPHITE STONE



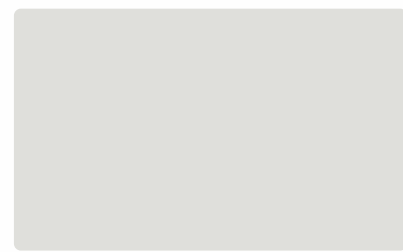
EC 127
TURKISH STONE



EC 128
BEIGE STONE



PENNY COPPER **EC 201**
▲ ■



BRIGHT SILVER **EC 202**
▲ ■ ● ◆



JADE GREEN **EC 203**
▲



METALLIC SILVER **EC 204**
▲ ■



CHAMPAGNE SILVER **EC 205**
▲ ■



BLUE SILVER **EC 206**
▲ ■



SPECTRA GREY SILVER **EC 207**
▲ ■ ● ◆



METALLIC BRONZE **EC 208**
▲ ■



ROSE METALLIC **EC 209**
▲ ■



WINE METALLIC **EC 210**
▲ ■



CHOCO BROWN **EC 211**
▲ ■ ● ◆



PEARL BROWN **EC 212**
▲ ■



RICH GOLD **EC 226**
▲



SPECTRA CHAMP SILVER **EC 227**
▲ ■



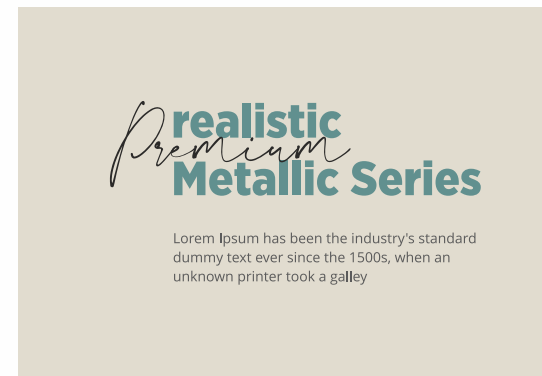
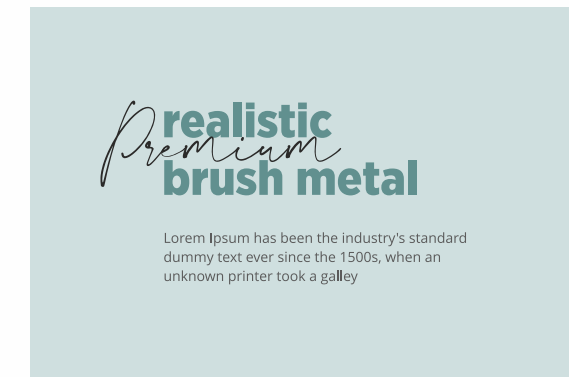
BURGANDY **EC 228**
▲



EC 303
BRUSH GOLD



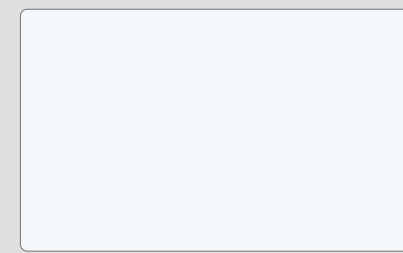
EC 302
BRUSH SILVER



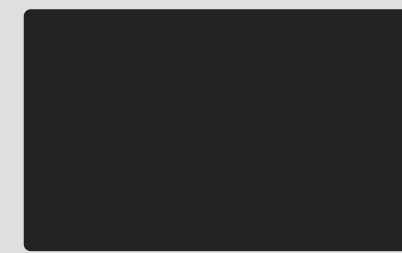
EC 307
MIRROR SILVER



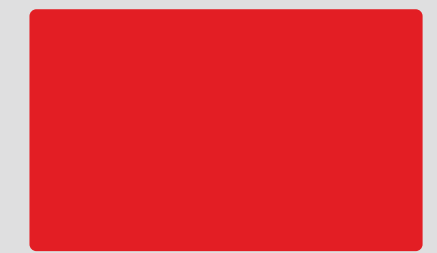
EC 308
MIRROR GOLD



EC 304
HIGH GLOSS WHITE
▲ ■ ● ◆



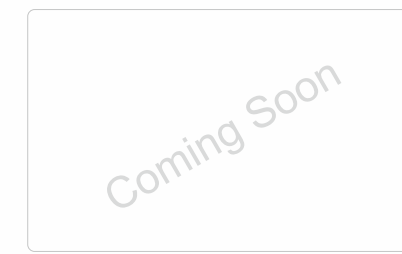
EC 305
HIGH GLOSS BLACK
▲ ■ ● ◆



EC 306
HIGH GLOSS RED
▲ ■ ● ◆



RICH GOLD **EC 229**
▲



EC 230





Exclusive **reminiscent
of real wood**

Lorem Ipsum has been the industry's standard dummy text ever since the 1500s, when an unknown printer took a galley



EC 118
PERSIAN WINE



EC 119
TIMBER WALNUT



EC 120
NATURAL CHESTNUT



EC 123
BALINESE WALNUT



EC 124
DARK OAK



EC 125
NOVOCINO PINE





EC 101
COUNTRY OAK



EC 102
VINTAGE CHESTNUT



Lorem Ipsum has been the industry's standard dummy text ever since the 1500s, when an unknown printer took a galley



EC 106
VINTAGE CHESTNUT



EC 107
AFRICAN PINE



EC 108
FLORENCE MAPLE



EC 103
VINTAGE CHESTNUT



EC 104
VINTAGE CHESTNUT



EC 105
VINTAGE CHESTNUT



EC 110
PEWTER PINE



EC 116
BURMA WOOD



EC 117
BURMA TEAK





BRIGHT RED **EC 213**
▲ ■



ORANGE **EC 214**
▲ ■



TRAFFIC YELLOE **EC 215**
▲ ■



PASTEL GREEN **EC 233**
◆ ● ■ ▲ ▼



DHOLPUR RED **EC 234**
◆ ● ■ ▲ ▼



COAL GREY **EC 235**
◆ ● ■ ▲ ▼



SEA BLUE **EC 216**
▲ ■



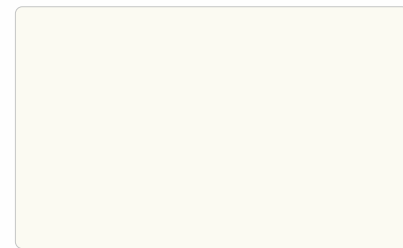
REFRESHING GREEN **EC 217**
▲



LEMON YELLOW **EC 218**
▲ ■



SAM BLUE **EC 219**
▲ ■



OFF WHITE **EC 220**
◆ ● ■ ▲ ▼



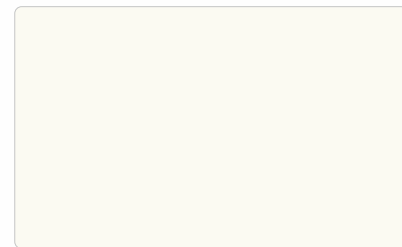
LIGHT GREY **EC 221**
▲ ■



GEM GREEN **EC 222**
▲



JET BLACK **EC 223**
◆ ● ■ ▲ ▼



PURE WHITE **EC 224**
◆ ● ■ ▲ ▼



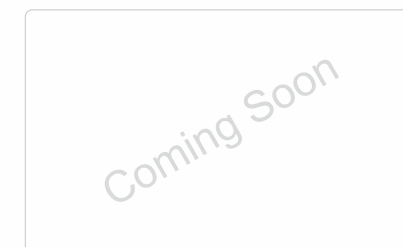
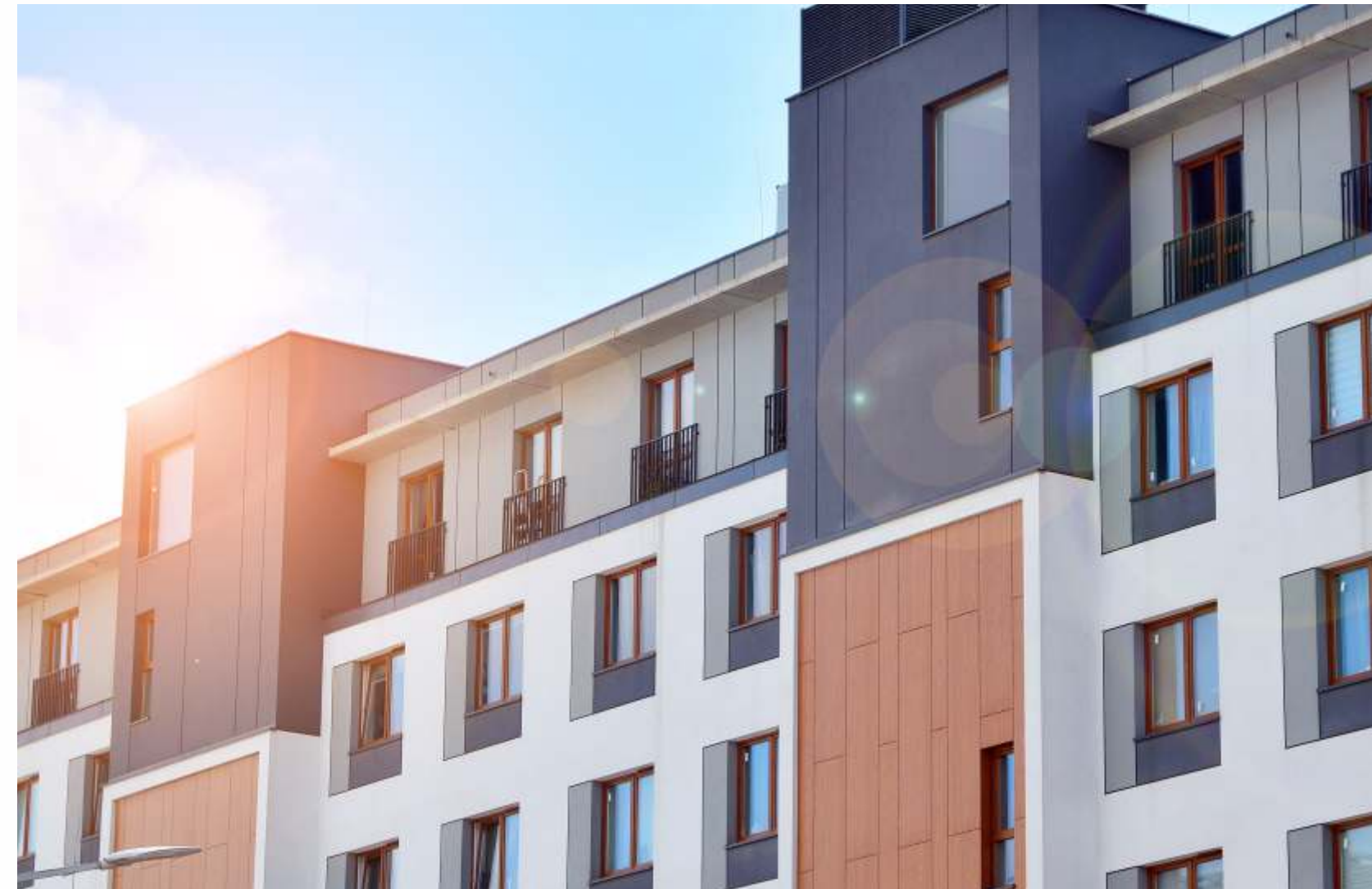
SIGNAL RED **EC 225**
▲



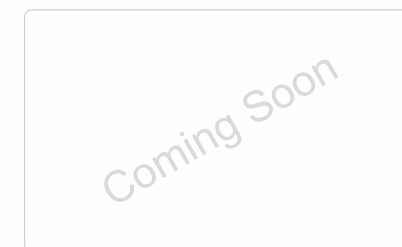
PARROT GREEN **EC 231**
▲ ■



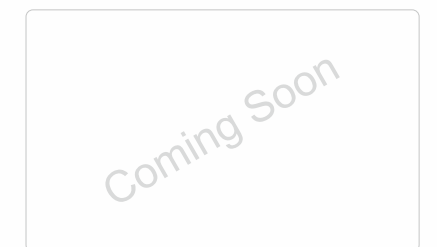
DAK BLUE **EC 232**
▲



EC 236



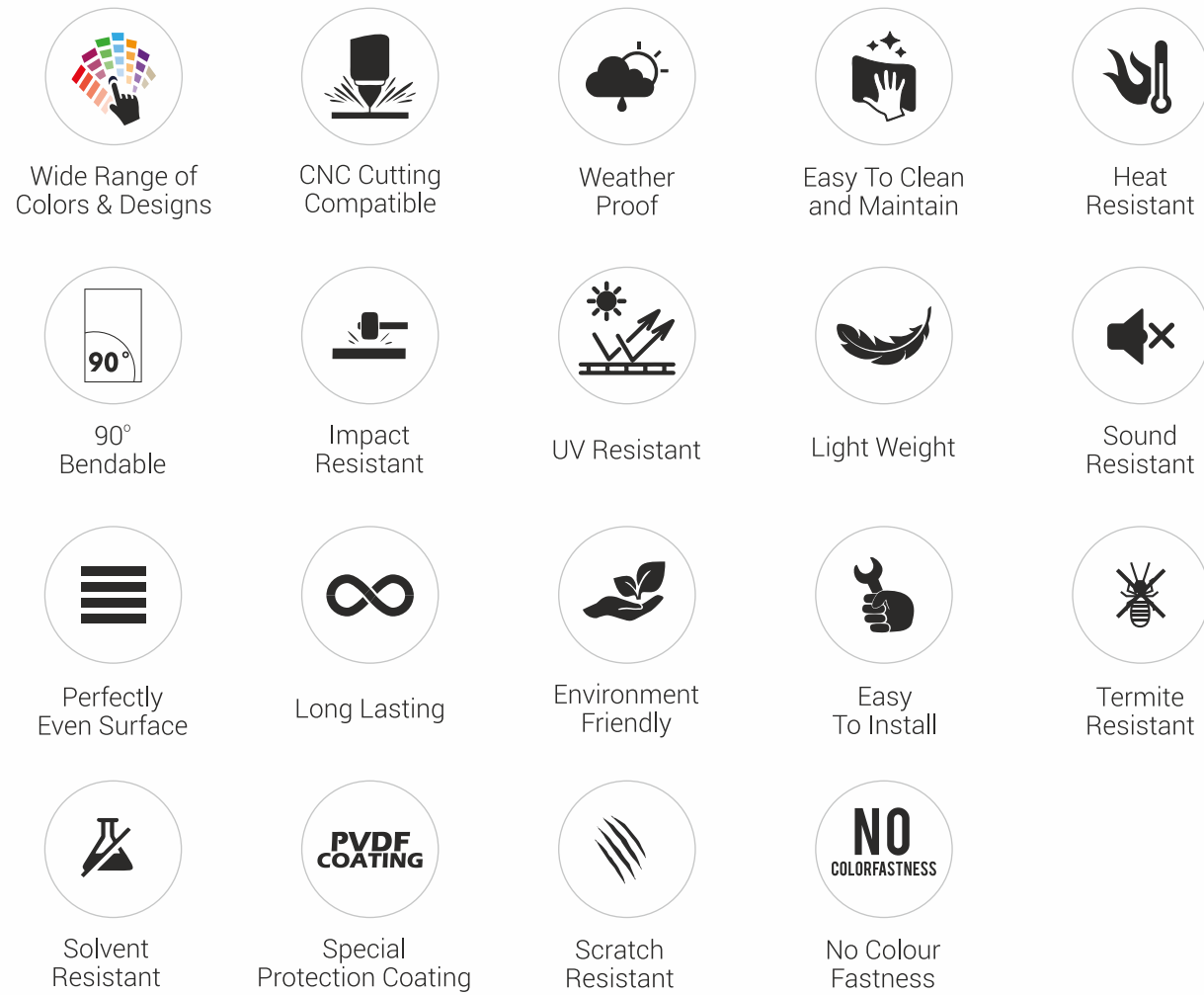
EC 237



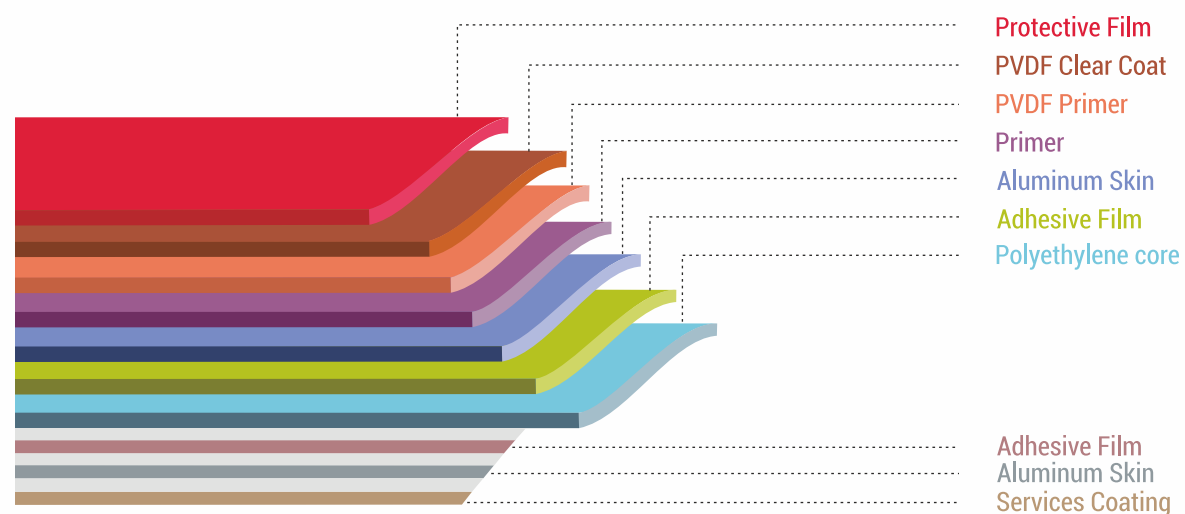
EC 238

FEATURES & ADVANTAGES

ACP consists of two high-strength aluminum sheets which sandwich a low density, insulating core. Hence, they are also known as sandwich panels. The core material contains a polyethylene plastic which ensures high-performance.



COMPOSITION



| GRADE | TOTAL THICKNESS | FRONT COIL THICKNESS | LDPE CORE THICKNESS | BACK COIL THICKNESS | WARRANTY | COATING | APPLICATION AREA |
|-----------------|-----------------|----------------------|---------------------|---------------------|-----------|---------|------------------|
| DIAMOND | 4MM | 0.5 MM | 3MM | 0.5MM | 15 YEARS* | PVDF | EXTERIOR |
| PEARL | 4MM | 0.25MM | 3.5MM | 0.25MM | 12 YEARS* | PVDF | EXTERIOR |
| | 3MM | 0.25MM | 2.5MM | 0.25MM | 12 YEARS* | PVDF | EXTERIOR |
| PLATINUM | 4MM | 0.25MM | 3.5MM | 0.25MM | 10 YEARS* | PVDF | EXTERIOR |
| | 3MM | 0.25MM | 2.5MM | 0.25MM | 10 YEARS* | PVDF | EXTERIOR |
| GOLD | 3MM | 0.15MM | 2.7MM | 0.15MM | N/A | PE | INTERIOR |
| SILVER | 3MM | 0.10MM | 2.8MM | 0.10MM | N/A | PE | INTERIOR |

Panel Dimensions

Standard Dimensions

1220 MM X 2440 MM
1220 MM X 3050 MM
1220 MM X 3660 MM

Thickness : 2 MM to 6 MM

Aluminum Skin Thickness : upto 0.5 MM
(Special thickness and size available on request)

Product Tolerances

Width ± 2.00 mm
Length ± 4.00 mm
Thickness ± 0.20 mm
Coil Thickness ± 0.02 mm
Bow Max 0.5 % of the length and/ or width maximum 5.00 mm
Squareness or width maximum 5.00 mm
Color Variations ±Δ5 from batch to batch
Surface Defect Surface shall not have any irregularities such as roughness, bucking and other imperfections.

FR GRADE ACP

While glass breakage / fallout allows fire to enter / exit, cladding allows / prevents spread



**warranty applicable with terms and conditions.
For Complete details, kindly contact dealer and ask for warranty certificate.